



**2019 MSZA CUP
SPILER WINDSURF HUNGARIAN CHAMPIONSHIP – ROUND 2
CENTRAL EUROPEAN CUP**

BALATONALIGA, 7-10 JUNE 2019

Organizing Authority: Magyar Szörf Akadémia SE

SAILING INSTRUCTIONS

NOTATIONS:

[DP] The penalty for a breach of this rule may, at the discretion of the protest committee, be less than disqualification.

[NP] A rule that shall not be grounds for protests by a boat. This changes RRS 60.1(a).

1. RULES

- 1.1. The regatta will be governed by the rules as defined in *The Racing Rules of Sailing* (RRS). RRS Appendix B will apply. Other document under RRS Definition: Rule (g) will be the Notice of Race of the Windsurf Hungarian Championship.
- 1.2. If there is a conflict between languages the English text will take precedence.

2. [DP] CODE OF CONDUCT

- 2.1. Competitors shall comply with any reasonable request from a regatta official.

3. NOTICES TO COMPETITORS

- 3.1. Notices will be posted on the official notice board located near the race office.

4. CHANGES TO SAILING INSTRUCTIONS

- 4.1. Any change to the sailing instructions will be posted no later than two hours before the scheduled time of the first race affected, except that any change to the schedule of races will be posted by 20:00 on the day before it will take effect.

5. SIGNALS MADE ASHORE

- 5.1. Signals ashore will be displayed on the signal mast near the race office.
- 5.2. When flag AP is displayed ashore, '1 minute' is replaced with 'not less than 30 minutes' in the race signal AP.

6. RACING AREA

- 6.1. The racing area is shown in Addendum 1.

7. SCHEDULE OF RACES

- 7.1. The schedule of races, including the time of the daily first warning signals is shown in Addendum 2.
- 7.2. A competitors briefing will be held 90 minutes before the scheduled time of the first warning signal of the each racing day near the race office.

8. CLASS FLAGS

8.1. For each starting group class flags are described below.

Class(es)	Class flag
Formula Windsurf Foil	Formula class insignia (letter F) on a white background
RS:X 8.5 RS:X Raceboard	Raceboard class insignia (letter R) on a white background
Bic Techno 293	Bic Techno 293 class insignia on a white background

9. THE COURSES

9.1. Course races will be sailed on windward-leeward or trapezoid courses. The diagram in Addendum 3 shows the courses, including the course designations, the order in which marks are to be passed, and the side on which each mark is to be left.

9.2. No later than the warning signal, the race committee signal boat will display the course signal.

10. MARKS

10.1. Marks 1, 2, 3 and 4 will be yellow cylindrical inflated marks.

10.2. The starting marks will be the race committee signal boat and a thin yellow cylindrical inflated mark.

10.3. The finishing marks will be the race committee signal boat and a thin orange cylindrical inflated mark with a blue flag.

10.4. When a gate mark is missing, the mark in position shall be left to port.

11. THE START

11.1. The starting line will be between a staff displaying an orange flag on the starting mark at the starboard end and the course side of the port-end starting mark.

11.2. To alert boards that a race or sequence of races will begin soon, the orange starting line flag will be displayed with one sound at least five minutes before a warning signal is made.

11.3. Boards whose warning signal has not been made shall avoid the starting area during the starting sequence for other races. The starting area is defined as the area 50 meters from the starting line in all directions. **[DP]**

11.4. A board that does not start within four minutes after her starting signal will be scored Did Not Start without a hearing. This changes RRS A4 and A5.

11.5. The warning signal for each succeeding race will be made as soon as practicable.

12. CHANGE OF THE NEXT LEG OF THE COURSE

12.1. To change the next leg of the course, the race committee will move the original mark (or the finishing line) to a new position.

13. THE FINISH

13.1. The finishing line will be between a staff displaying an orange flag on the race committee signal boat and the course side of the mark at the end of the finishing line.

14. TIME LIMITS AND TARGET TIME

14.1. If no board has sailed the course and finished within 45 minutes the race committee shall abandon the race.

14.2. If no board has passed Mark 1 within 15 minutes the race committee shall abandon the race.



- 14.3. The target time of a race is 25 minutes. Failure to meet the target time will not be grounds for redress. This changes RRS 62.1.
- 14.4. Boards failing to finish within 15 minutes after the first board sails the course and finishes will be scored Did Not Finish without a hearing. This changes RRS 35, A4 and A5.

15. PROTESTS AND REQUESTS FOR REDRESS

- 15.1. Protest forms are available at the race office. Protests and requests for redress or reopening shall be delivered there within the appropriate time limit.
- 15.2. For each starting group (one or more classes), the protest time limit is
- (a) 60 minutes after the last board has finished the last race of the day, or
 - (b) 60 minutes after the race committee signals no more racing today on the water, or
 - (c) 30 minutes after the race committee signals no more racing today ashore, whichever is later.
- 15.3. Notices will be posted as soon as possible after the protest time limit to inform competitors of hearings in which they are parties or named as witnesses. Hearings will be held in the protest room, located near the race office.
- 15.4. Notices of protests by the race committee, technical committee or protest committee will be posted to inform boards under RRS 61.1(b).
- 15.5. For breaches of SI 17.4, the race committee may apply a standard penalty without a hearing as follows:
- (a) Not signing out: one point scoring penalty in her first race of the day,
 - (b) Not signing in: one point scoring penalty in her last race of the day.
- However, the race committee may protest a board when they consider the standard penalty to be inappropriate. A board that has been penalised with a standard penalty can neither be protested for the same incident by another board nor can another board request redress for this race committee action. This changes RRS 60.1, 63.1 and A5.
- 15.6. On the last scheduled day of racing a request for redress based on a protest committee decision shall be delivered no later than 30 minutes after the decision was posted. This changes RRS 62.2.

16. SCORING

- 16.1. To request a correction of an alleged error in posted results, a board may complete a scoring enquiry form available at the race office.

17. [DP] SAFETY

- 17.1. Competitors shall wear their personal flotation devices at all times while afloat, except briefly while changing or adjusting their clothing or personal equipment.
- 17.2. Boards not leaving the shore for a scheduled race shall promptly notify the race office.
- 17.3. A board that retires from racing
- (a) shall notify the race committee before leaving the racing area if possible, or
 - (b) shall notify the race office as soon as possible.
- 17.4. Event sign-out and sign-in system:
- (a) Before leaving to race on each scheduled racing day, each competitor shall personally sign out on the required form.
 - (b) Within 30 minutes after returning ashore, but no later than the protest time limit for that class, each competitor shall personally sign in on the required form.



18. [DP] EQUIPMENT, EQUIPMENT INSPECTION AND REPLACEMENT OF EQUIPMENT

18.1. Substitution of damaged or lost equipment will not be allowed unless authorized by the technical committee. Requests for substitution shall be made to the committee at the first reasonable opportunity.

19. OFFICIAL BOATS

19.1. Official boats will be marked as follows.

Boat type	Signal
Race Committee	RC flag
Protest Committee	JURY flag

20. SUPPORT BOATS

20.1. The driver(s) of a support boat will be responsible for the control of the boat at all times and will be held responsible for any inappropriate behavior, dangerous actions or improper practices, or actions affecting the fairness or safety of competition.

20.2. Support boats shall not leave any device, piece of equipment, buoy, marker or similar item permanently in the water.

20.3. Except when performing safety operations, support boats shall not be positioned:

- (a) closer than 50 meters of any board racing;
- (b) within 50 meters of the starting line and marks from the time of the preparatory signal until all boards have left the starting area, or the race committee signals a postponement, general recall or abandonment;
- (c) between any board racing and the next mark of the course;
- (d) between the inner and outer trapezoid courses when boards are racing on both courses;
- (e) within 50 meters of any mark of the course while boards are in the vicinity of that mark;
- (f) within 50 meters of the finishing line and marks while boards are finishing.

20.4. In addition, support boats that are motoring above 5 knots shall remain at least 150 meters from any board racing.

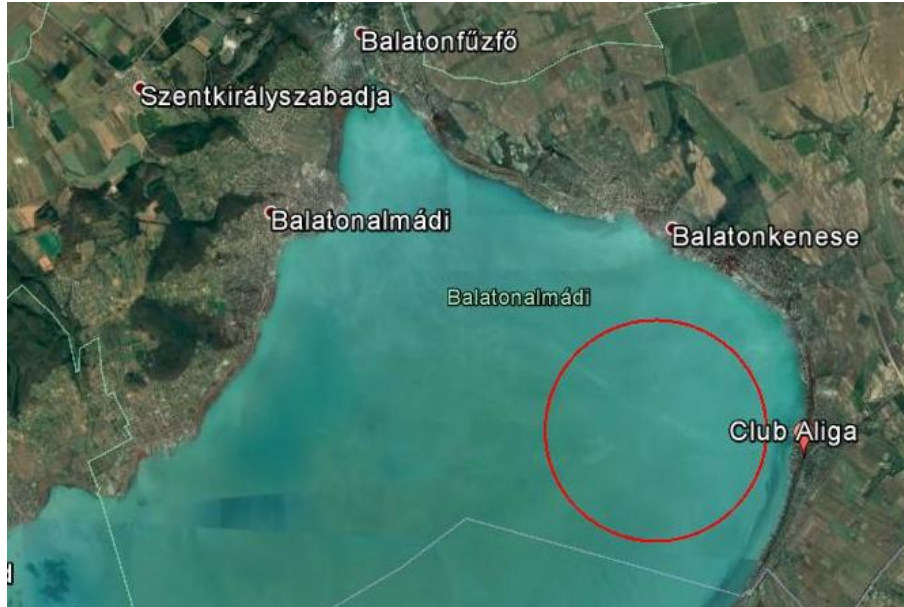
21. DISCLAIMER OF LIABILITY

21.1. The competitors are fully responsible for their own safety during the events both on and off the water, and their responsibility is not limited by either the Notice of Race or the Sailing Instructions or by any other regulations. The person in charge shall decide for himself or herself whether they have sufficient qualification to participate in the competition under the prevailing weather conditions. See rule 4, Decision to Race.

21.2. The organizing authority, its employees, officials and delegates involved in the organization of the event will not accept any liability whatsoever for any personal injuries, casualties, fatalities or material damage connected with the race, with the participation in the race or which may occur during the race within the framework allowed by the relevant laws. The verification of the eligibility, certificates from sport physicians, insurance and observance of the safety regulations carried out by the organizers is aimed at ensuring a fair competition and does not exempt the participants from their own responsibility for complying with the relevant regulations.

21.3. By signing the entry form, the person in charge of the board declares that he/she is aware of the rules and regulations relating to the race and the water transport, he/she accepts them and he/she makes the people in his/her scope of responsibility acquainted with them and he/she will ensure that they will fully observe all these rules and regulations both on and off the shore during the whole regatta.

ADDENDUM 1 – RACING AREA

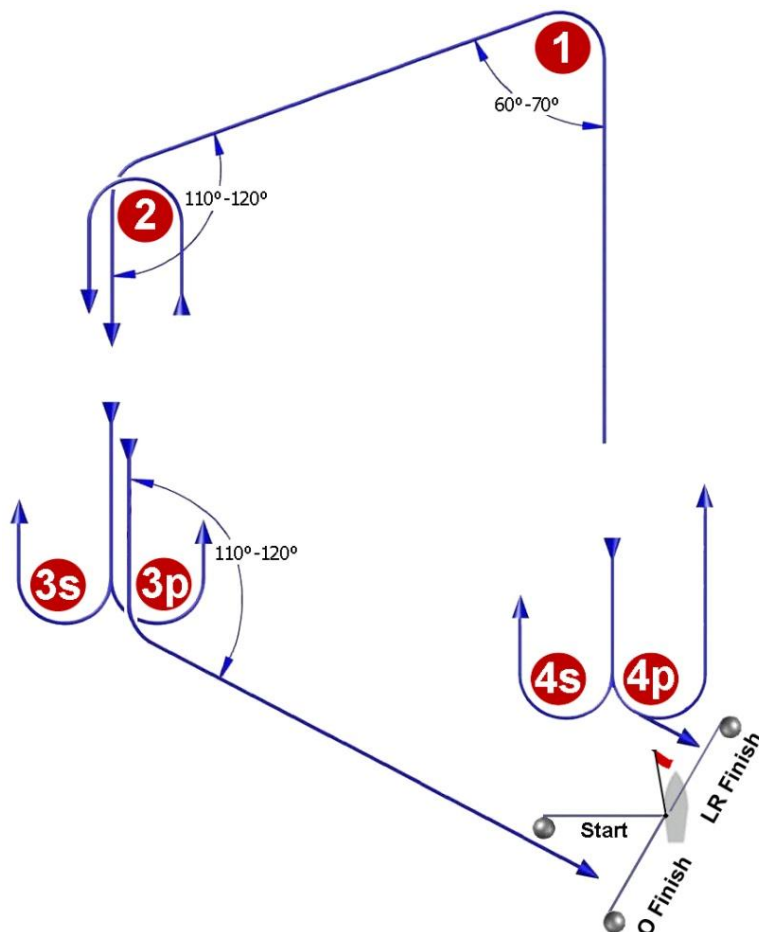


Approximate area center	Diameter
N 46° 59.245' E 18° 07.424'	2.5 km

ADDENDUM 2 – SCHEDULE OF RACES

	8 June 2019 Saturday		9 June 2019 Sunday		10 June 2019 Monday	
	Warning signal	#	Warning signal	#	Warning signal	#
Formula	10:30	4	11:00	4	9:30	4
Windsurf Foil	10:30	4	11:00	4	9:30	4
RS:X 8.5 and RS:X	10:30	4	9:30	4	9:30	4
Raceboard	10:30	4	9:30	4		
Bic Techno 293	10:30	4	9:30	4		
Lightwind Freestyle	as announced on shore		as announced on shore		as announced on shore	

ADDENDUM 3 – COURSE DIAGRAM



Course signal	Mark rounding order
O2	Start – 1 – 2 – 3s/3p – 2 – 3p – O Finish
O3	Start – 1 – 2 – 3s/3p – 2 – 3s/3p – 2 – 3p – O Finish
LR2	Start – 1 – 4s/4p – 1 – 4p – LR Finish
LR3	Start – 1 – 4s/4p – 1 – 4s/4p – 1 – 4p – LR Finish

In the Formula class and in the U15 category of the Bic Techno 293 class a board may complete one lap less of the course (Silver finisher). When doing so, a board shall notify the race committee while crossing the finishing line. The first 'silver finisher' will be ranked as if she has finished one place behind the last board that completed all the required laps in the race. Other 'silver finishers' will be ranked accordingly.